

SuiteFactory on the Web

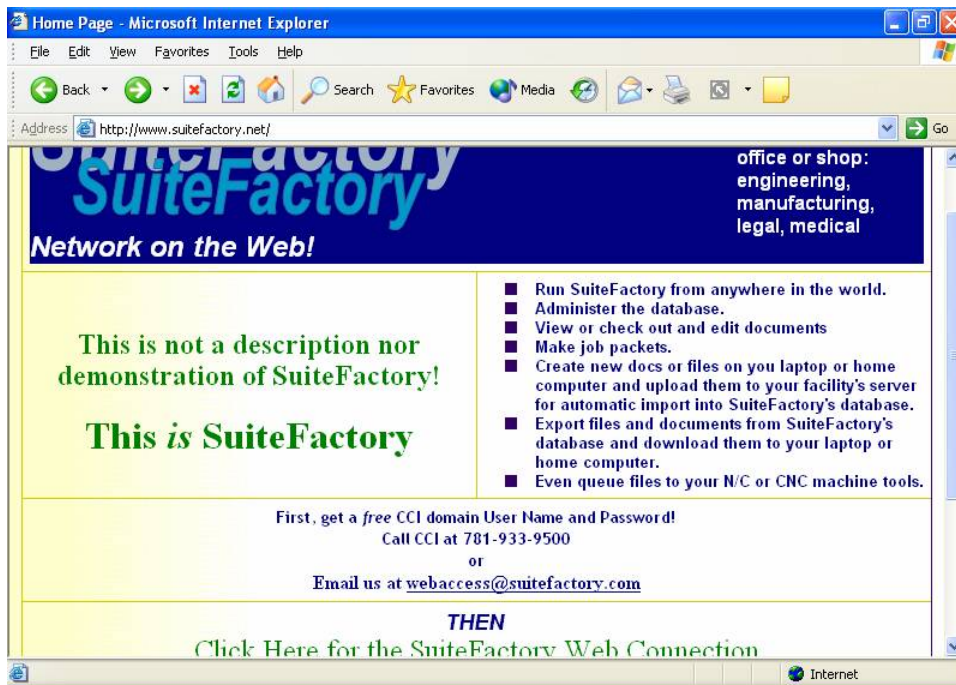
This document is meant to be a guide to be used, (at least the first time), along with a CCI employee to get you started and to point out important facts and features.

Prerequisites

- PC with Windows 98/NT/2000/XP.
- Microsoft Internet Explorer V5.0 or greater with security set to allow ActiveX download and execution. See Appendix A on how to make any security changes if necessary. (Netscape will not work.)
- Access to the Internet.
- A SuiteFactory Network user name and password.

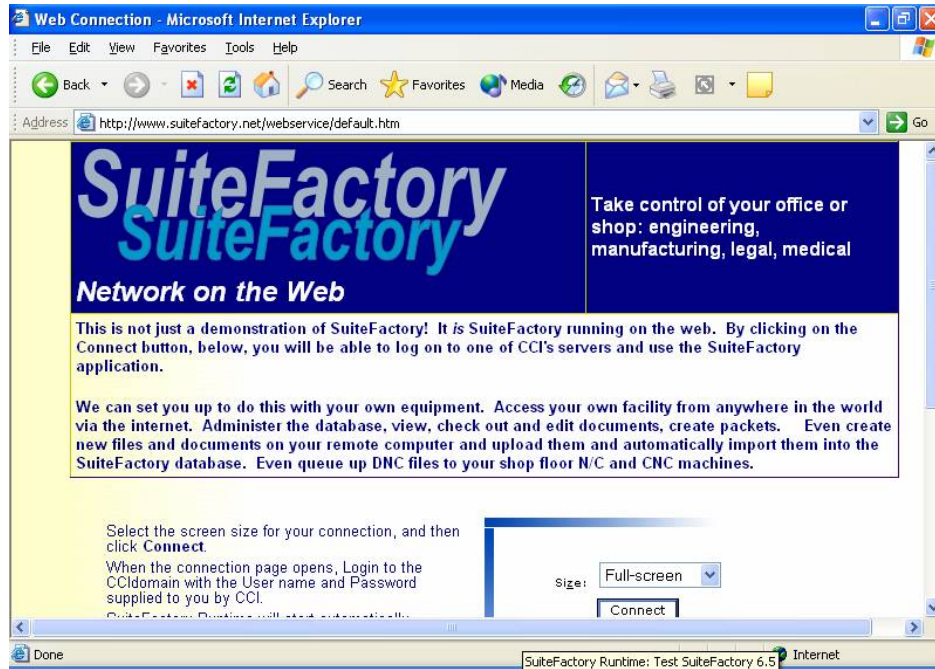
Accessing SuiteFactory with a remote session on the web

- Start Windows Internet Explorer.
- In the Address fields enter <http://www.suitefactory.net> and click Go or press Enter.
- On the resulting web page, after reading the description, scroll to the bottom and click on the link, Click Here for the SuiteFactory Web Connection.

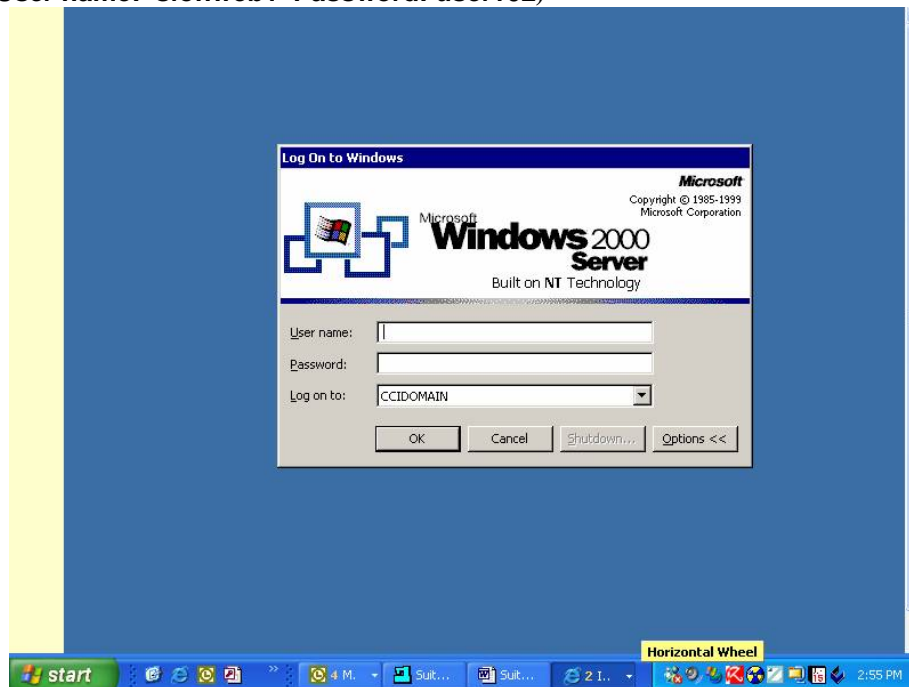


CAD/CAM Integration, Inc.
76 Winn Street, Woburn, MA 01801
Ph: 781-933-9500 Fax: 781-933-9238
www.suitefactory.com and www.mes-cci.com

- This brings you to the connection page. We recommend leaving the screen size the default, Full Screen. Click the Connect button.

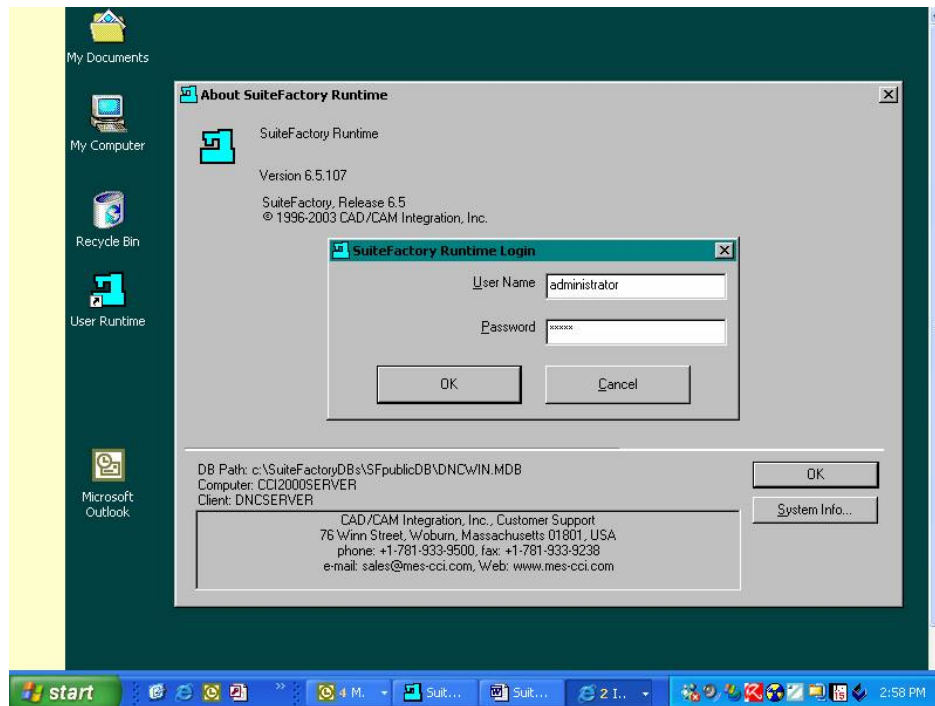


- In the resulting Windows 2000 Server login dialog box enter the user name and password supplied by CCI, just below, and press OK.
(User name: sfonweb1 Password: user102)

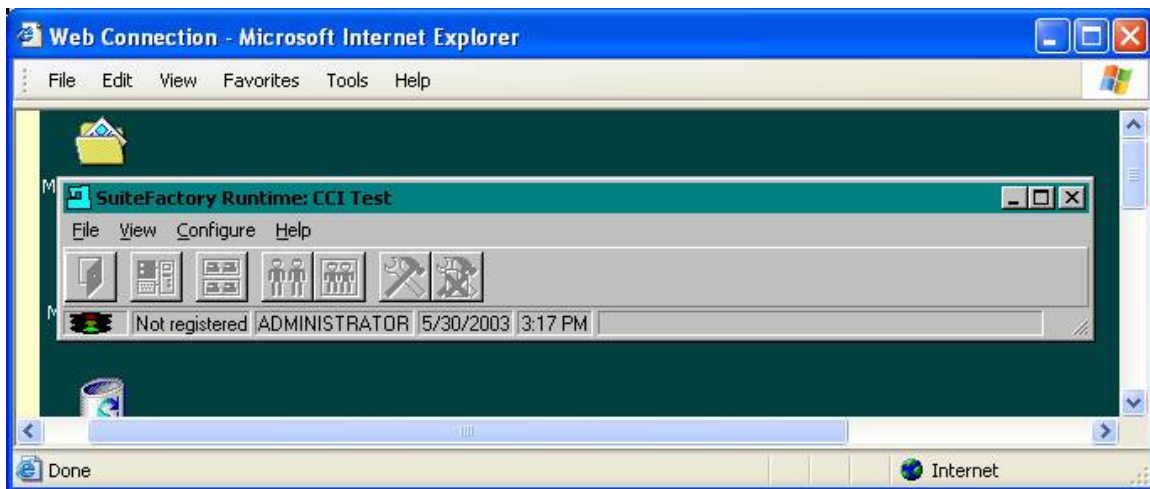


CAD/CAM Integration, Inc.
 76 Winn Street, Woburn, MA 01801
 Ph: 781-933-9500 Fax: 781-933-9238
www.suitefactory.com and www.mes-cci.com

- SuiteFactory Runtime will automatically startup Login as **administrator**. The password is **admin**.

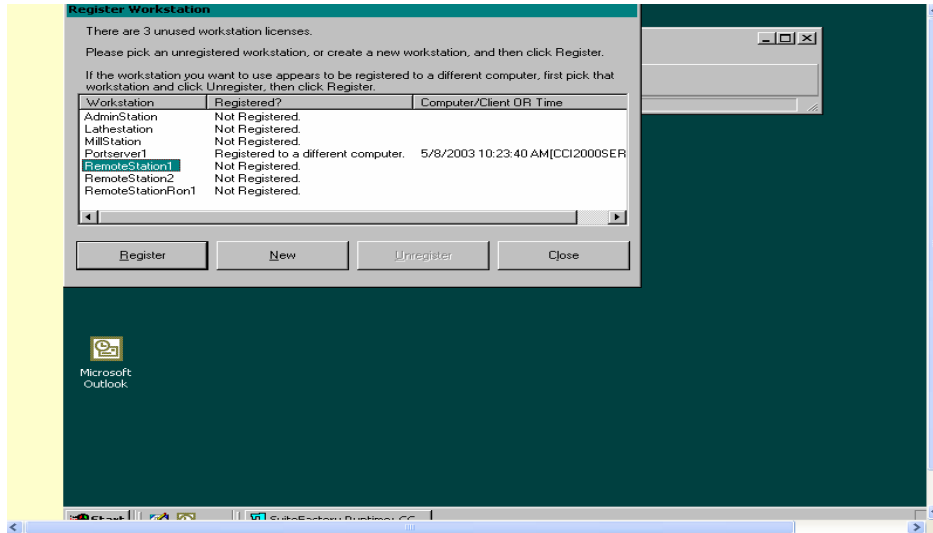


SuiteFactory Runtime now starts.

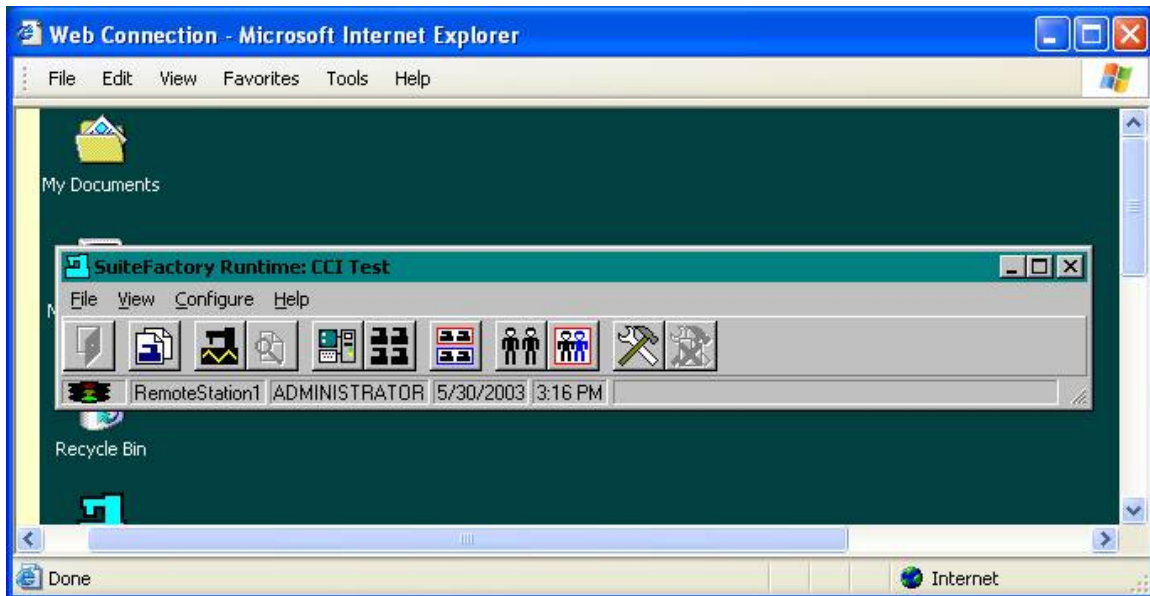


CAD/CAM Integration, Inc.
76 Winn Street, Woburn, MA 01801
Ph: 781-933-9500 Fax: 781-933-9238
www.suitefactory.com and www.mes-cci.com

- Register the session to RemoteStation1. (Click Configure/Register this workstation. If it says that RemoteStation1 is registered to a different computer then unregister it first.)



Registered.

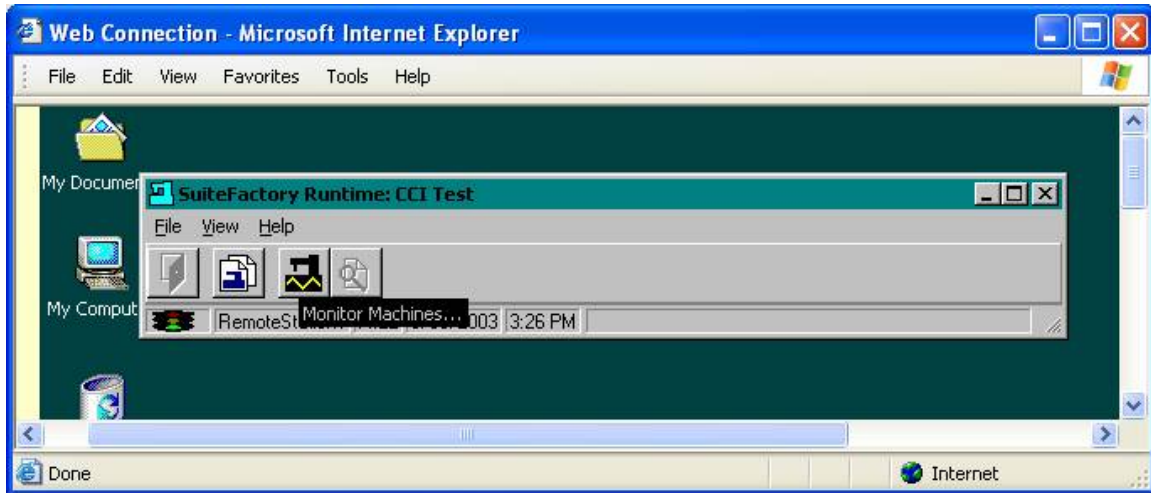


- Logout from administrator. (Click File/Logout)
- The administrator account is used to setup users and user groups and to setup the rights for each group and all system wide settings. We will start with users with only the most basic rights and work up from there.

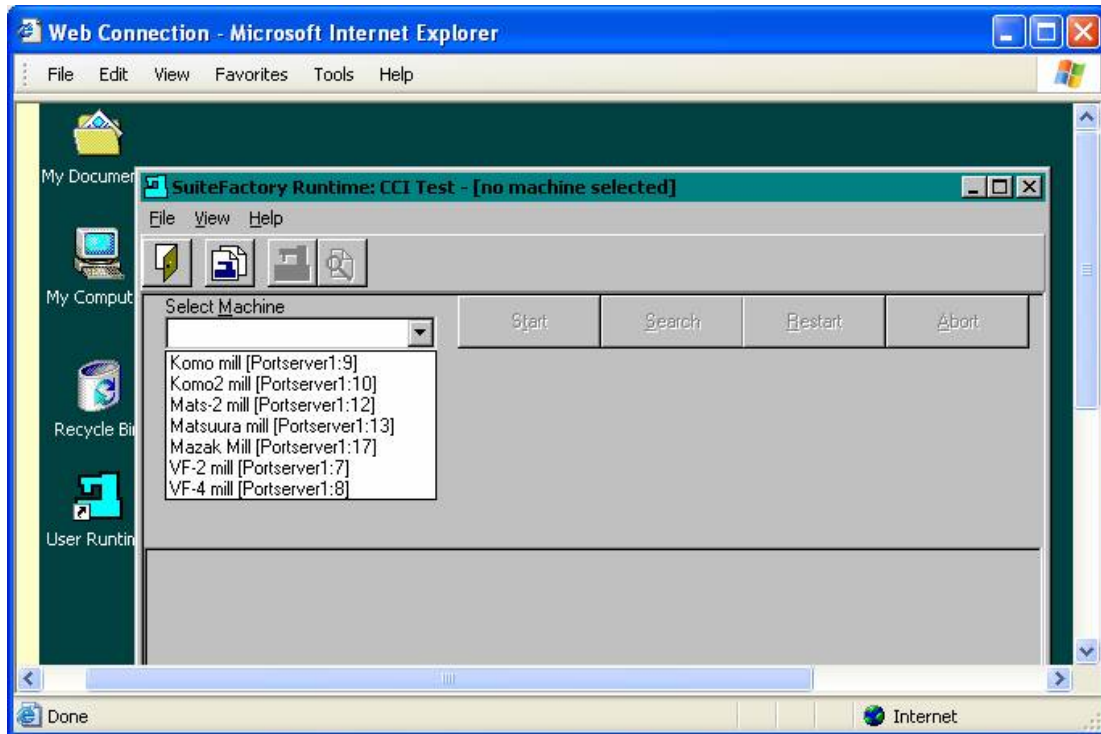
CAD/CAM Integration, Inc.
 76 Winn Street, Woburn, MA 01801
 Ph: 781-933-9500 Fax: 781-933-9238
www.suitefactory.com and www.mes-cci.com

Typical Shop Floor Operator – (Given basic rights for download/upload/edit/compare)

- Mill operators: Login as **mill**. There is no password for user **mill**.



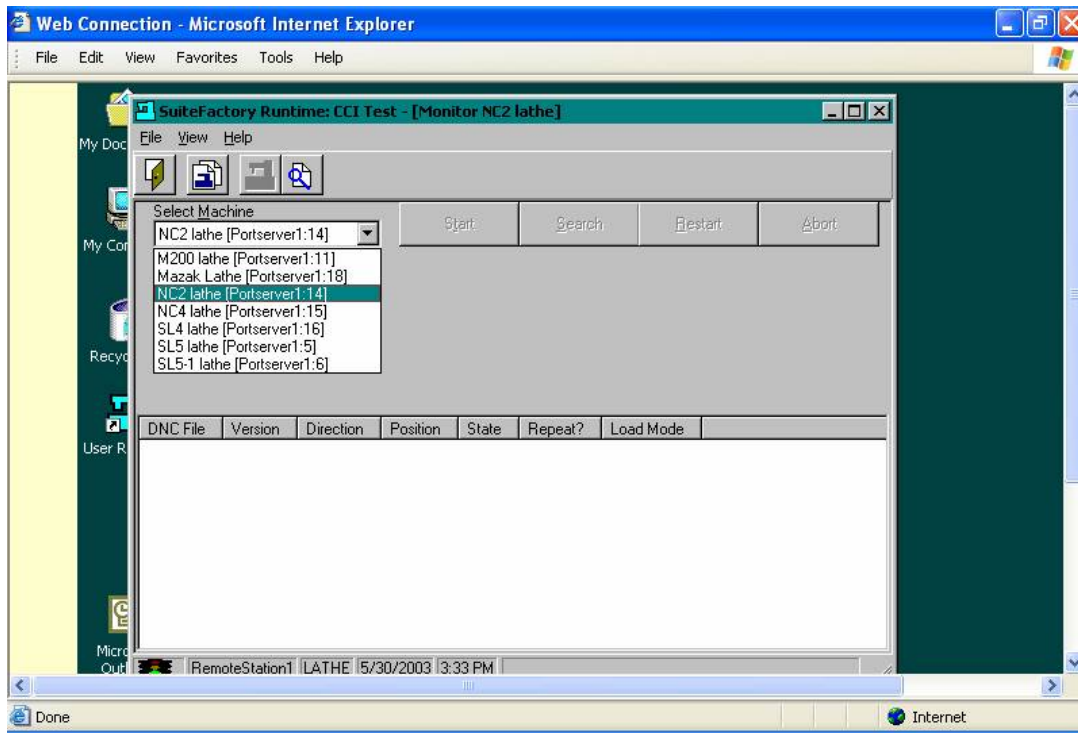
- See “Tool Tips” (button descriptions) when you move your mouse over a button.
- Click on Monitor Machines. Click on down arrow. See list of milling machines.



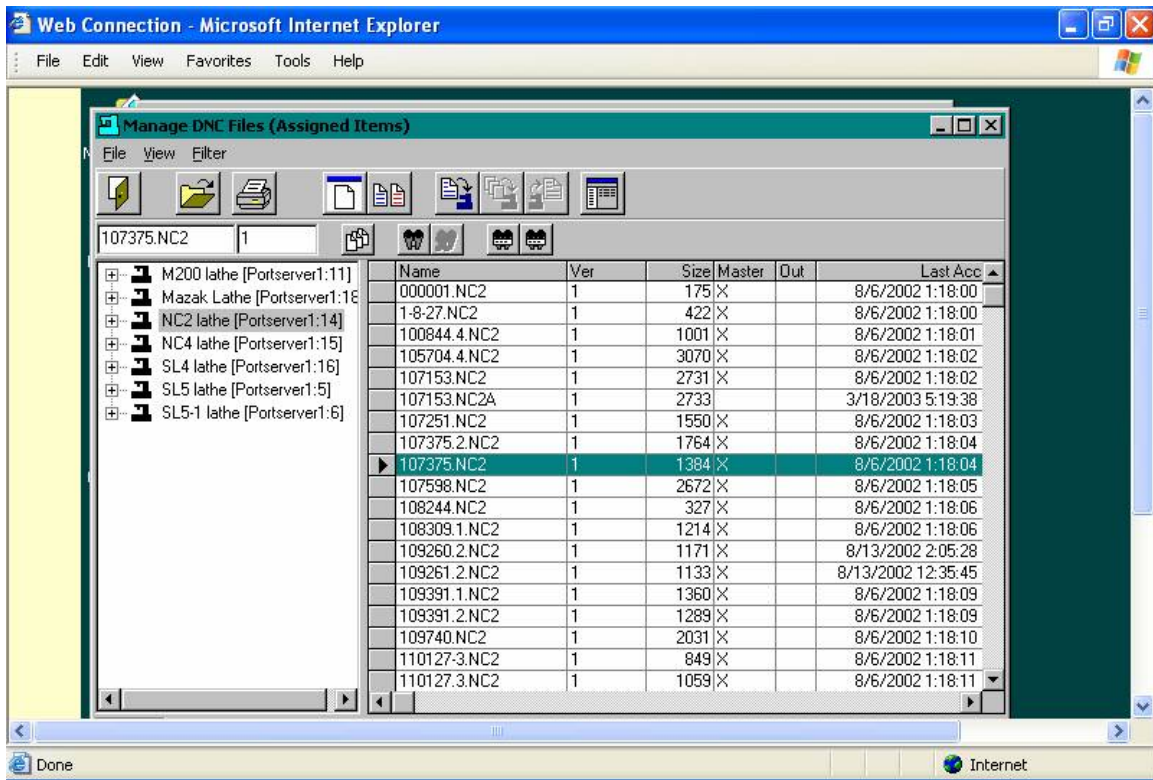
- Click on Close. (The door)

CAD/CAM Integration, Inc.
76 Winn Street, Woburn, MA 01801
Ph: 781-933-9500 Fax: 781-933-9238
www.suitefactory.com and www.mes-cci.com

- Logout (File/Logout)
- Lathe operators: Login as **lathe**. There is no password for user **lathe**.
- Select Monitor Machines. Select a machine by first clicking on the down arrow. See that only lathes are listed. Select NC2 for example.



- Select Manage DNC Files: (The white button – 2nd from left)



- Select a file using quick search by typing in the filename field.
- View a file.
- Compare two files.
- Send a file to a machine. Note the column headings.
- Click on the small search data buttons. Click on the Search button and try out the search engine. First highlight one of the machines, NC4, for example. In the Fields column scroll down and select [Name].[DNCfiles]. In the comparison field select "is like". In the Compare to field enter 110* the click on Enter.
- Monitor Screen buttons including the Queue Editor.
- Logout (Click File/Logout)

Programmer – (all operator rights plus editing, signing off, renaming, copying, deleting, assigning, third party applications and more)

- Mill programmers: Login as **mprog**. Password is **prog**.
Lathe programmers: Login as **lprog**. Password is **prog**.
Note the many more buttons are available.
- Views- Resource Collections: containers which link users, machines and DNC files.
- Edit a DNC file.
- Logout (File/Logout)

Administrator – (can do all functions built into SuiteFactory)

- Login **administrator**. Password is **admin**.
- Create Resource Collections

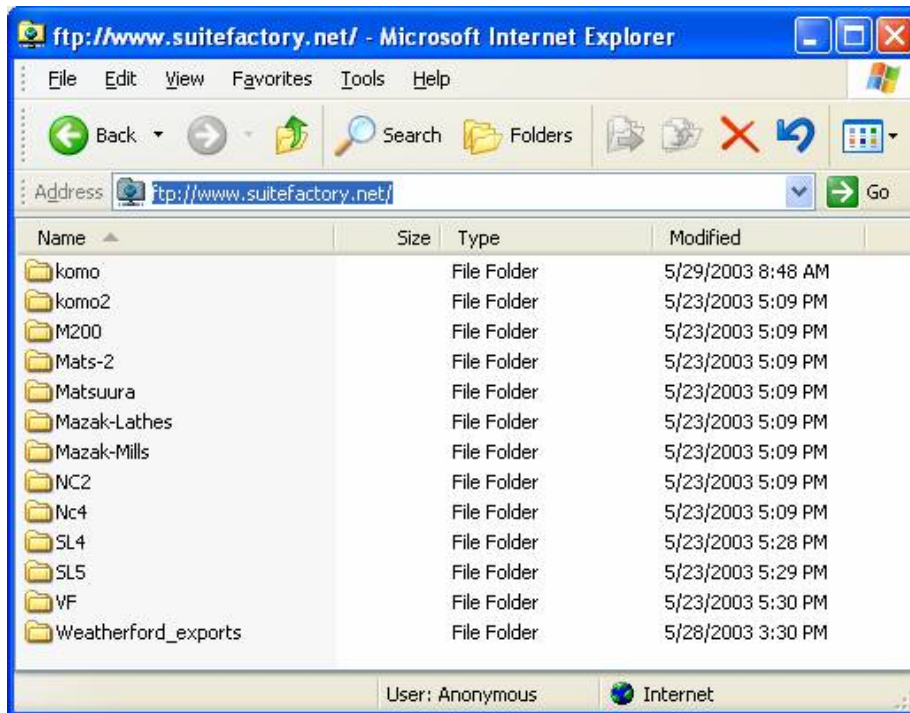
CAD/CAM Integration, Inc.
76 Winn Street, Woburn, MA 01801
Ph: 781-933-9500 Fax: 781-933-9238
www.suitefactory.com and www.mes-cci.com

- Create new machine & set parameters
- Create new user group to assign rights.
- Import/Copy to Folder–

FTP file(s) from your local workstation to SuiteFactory network. The SuiteFactory Maintenance Engine running on the CCI server then imports it/them into the database.

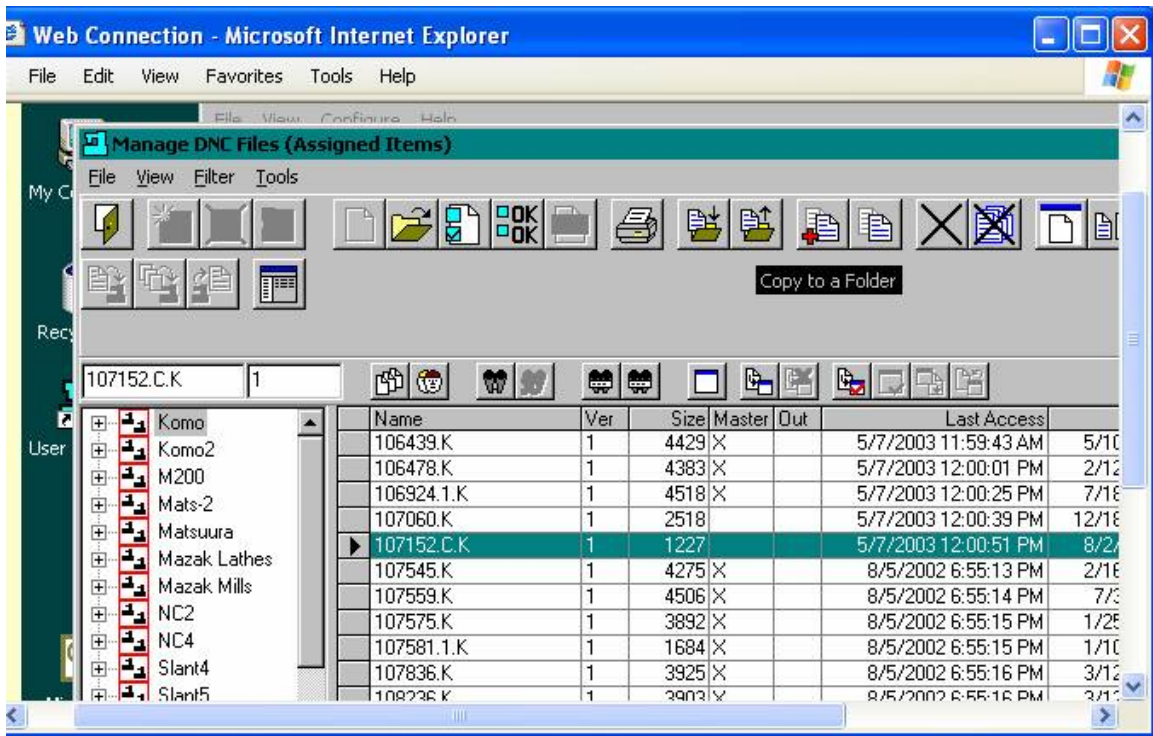
- Minimize the remote screens.
- Start a new instance of Internet Explorer
- Enter <ftp://www.suitefactory.net>

You will see the following screen which is a connection to CCI's ftp site. Each of the folders except for the last one, represents each kind of machine in this example factory.

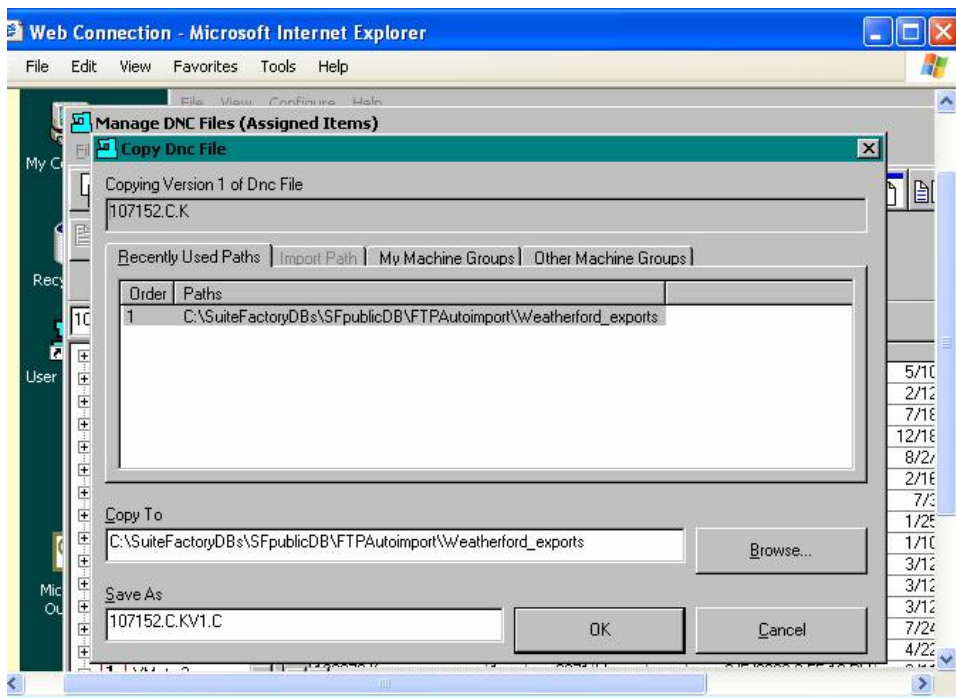


- Drag and drop files from your local pc/network into folders. For example, Komo is a mill. Drop a file into the Komo folder on the CCI ftp site.
- Restore the remote screen.
- Wait about 30 seconds. In the Manage DNC files screen highlight the Komo Resource Collection icon and see the program (s) appear.
- Edit one of these files and use the Copy to Folder feature to send it back to your PC.

CAD/CAM Integration, Inc.
 76 Winn Street, Woburn, MA 01801
 Ph: 781-933-9500 Fax: 781-933-9238
www.suitefactory.com and www.mes-cci.com



- Highlight a file you want to retrieve. Click on the Copy to a Folder button.



- Click OK.

CAD/CAM Integration, Inc.
 76 Winn Street, Woburn, MA 01801
 Ph: 781-933-9500 Fax: 781-933-9238
www.suitefactory.com and www.mes-cci.com

- Highlight the path to Weatherford_exports in the “Recently Used Paths” tab or if necessary Browse to get there.
- Minimize your remote screen and bring back the CCI ftp screen.
If you look inside the folder, Weatherford_exports, you will find the file you just copied. This file can be dragged and dropped to your PC.

When done, un-register from RemoteStation1 and exit from SuiteFactory. Logout and close down browser screens.

Appendix A

Internet Explorer Settings

Internet explore must be configured to allow: (Instructions given here are for IE V6.)

1. **ActiveX downloads and execution.**
On Internet Explorer click Tools/Internet Options. Click on the Security tab. If security is set to medium or low then you need not change anything. If it set to Custom Level then check that **Download Signed ActiveX Controls** is set to Prompt or Enable; **Run ActiveX controls and plug-ins** is set to Enable; Script ActiveX controls marked safe for scripting is set to Enable.
2. **Trust website <http://www.suitefactory.net> and ftp site <ftp://www.suitefactory.net>.**
Also on the Security tab click the select Trusted Sites then click on Sites. Add the two SuiteFactory sites listed above.
3. **Browsing should be set to enable folder view for FTP sites.**
Click on the Advanced tab. Under Browsing make sure the Enable folder view for FTP sites is checked.