

CCI Driving Manufacturing Productivity for Over Two Decades

Security

The Secure System

Your company's data is the most important asset that it possesses. If this data is compromised, lost, misused or stolen it would have a negative effect on your company's ability to compete in the competitive open market.

Most people don't realize that the data used on the shop floor and the access to it can represent an area where "Security" plays an important role. Security and data access controls which user can access which data for which purposes. Controlling just the access to data is not enough. You want to assure that the correct individual accesses the correct data for the intended purpose.

SuiteFactory provides the flexibility to be able to create the security level(s) needed to provide the correct access privileges to the correct users for the correct data and equipment access.

SuiteFactory Security:

Login

At startup SuiteFactory only allows access to your data by requiring your personnel to login into the system via customer settable user and passwords.

A login window is displayed requiring a user name and optional password. Logins require that SuiteFactory defined "Users" are assigned to "User Groups".

Users

Users of SuiteFactory can be assigned any number of User Groups which controls the access to SuiteFactory and your company's data. Many different "Users" can belong to the same "User Groups". Users who are assigned by the Administrator to various User Groups gathers all of their rights from the User Groups they belong to.

User Group

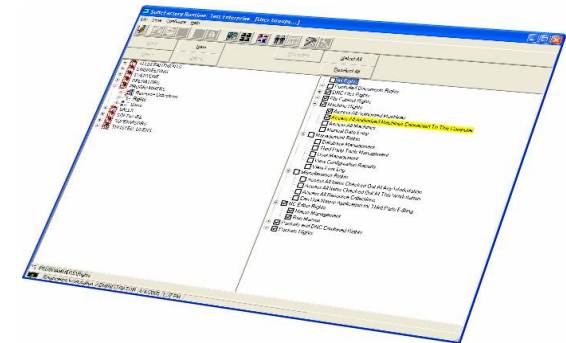
System access to the various functions is controlled by the different User Groups a User belongs to. A User gathers all of their rights from all of the User Groups they belong to. These Groups are all customer definable an Administrator with appropriate rights.

Your Administrator is never limited by a pre-determined set of "User Groups/Users" via a small set of check box type rights since SuiteFactory is an Enterprise Application.

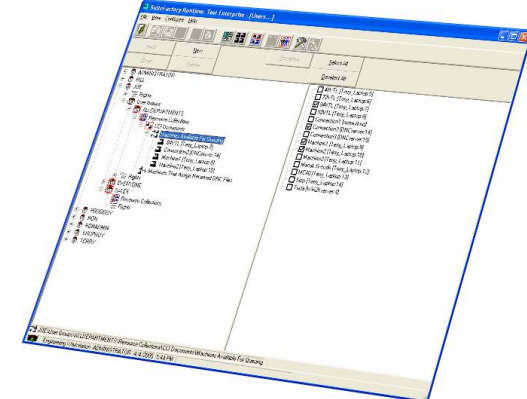
Login to SuiteFactory:



Setting Up Groups:



Setting Up Users:



CAD/CAM Integration, Inc.
76 Winn St.

Woburn, MA 01801

Web: www.suiteFactory.com

E-mail: sales@suiteFactory.com