

CCI Driving Manufacturing Productivity for Over Two Decades

Language

Localization Features

Why have localization Features? Our foreign customers indicated to us that they needed to be able to translate their national and local language dialects into SuiteFactory at their sites without having to send anything back to CCI for inclusion into SuiteFactory.

Microsoft's Process Inadequate

CCI determined it had to offer its customers an alternative to Microsoft's limited language inclusion mechanism to avoid the requirement of them having to work with Unicode text files, Microsoft Word files and then return these translations to CCI in the USA repeating this process for every change to SuiteFactory's menus, descriptions, etc.

This process would be too slow and error prone to work in a real world situation.

CCI's Translation Paradigm

CCI decided to redesign how SuiteFactory manages and provides Users access to SuiteFactory's internal GUI text(s). CCI wanted to allow its customers to have complete control in creating their translations so they could meet their very precise local requirements.

These new features allow a translator to localize SuiteFactory to almost any

language supported by Microsoft Windows 2000 or later without having to create a new installation sets. These SuiteFactory exclusive features allow a customer to customize the translation(s) to meet local requirements. A customer can also email these translations back to CCI for incorporating into SuiteFactory's base language support.

CCI Translation Modules

Manage String Resources Window

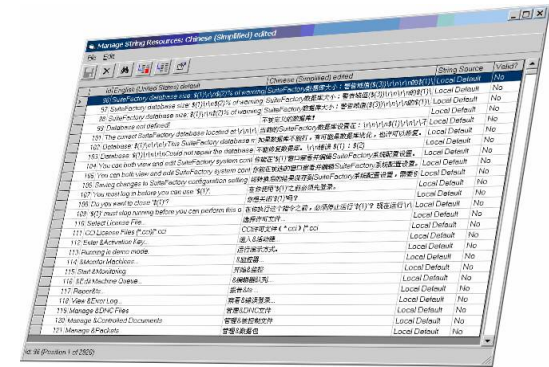
SuiteFactory's Manage String Resources Module displays a list of all text resources used by SuiteFactory displaying one row for each text resource. Each row includes the Default text, Edited text, String Source and a column to indicate if the translator or proof-reader has marked the translation of this item as valid.

The Translate String window SuiteFactory's Translate String Resource Module allows you to create/edit the translation displaying many rows of data including the original text/translation description. A list of the substitution parameters that SuiteFactory expects for this text resource is also displayed.

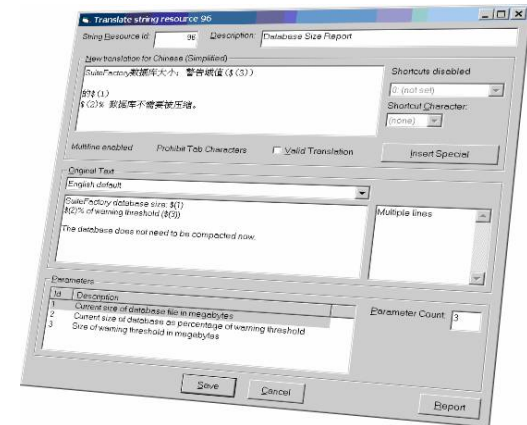
Translating the text entry

Different text resources have different requirements for the text and SuiteFactory allows you to describe the specific requirements for this text resource including any allowed/needed short-cut characters.

Manage String Resource



Translate String Resource





CAD/CAM Integration, Inc.
76 Winn St.
Woburn, MA 01801
Web: www.suiteFactory.com
E-mail: sales@suiteFactory.com